

# Cody Hitch

## A037-8 Ford No Drill Kit & Exhaust Hanger Extension Kit

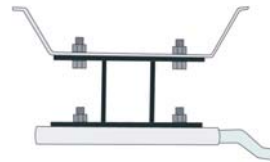
---

### No Drill Kit Mounting



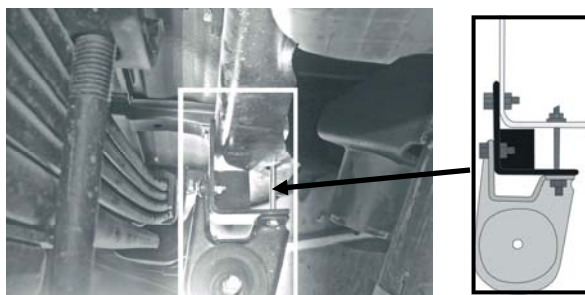
Mount the No Drill plates to the truck frame with the wide end toward the front of the truck. There are right and left hand No Drill plates shaped to fit over the bends in the frame. Use the included U-bolts to clamp plate on front, 1/2" bolt, heavy washer and locking nut into existing frame hole in rear.

### Front Exhaust Hanger Extension



This exhaust hanger extension is used on the exhaust bracket directly in front of the rear axle of the truck. Before hitch installation, remove two nuts on top of frame brace that hold exhaust hanger to brace and lower exhaust. After hitch installation, fasten the exhaust hanger extension to frame bracket using supplied 1/4" bolts/washers/nuts. Fasten original exhaust hanger to exhaust hanger extension using original hardware.

### Rear Exhaust Hanger Extension



This exhaust hanger extension is used on the exhaust bracket behind the rear axle of the truck. Before hitch installation, remove two bolts that fasten it to the frame and lower exhaust. After hitch installation, fasten the exhaust hanger extension to frame through top hole, using supplied 1/4" bolt/washer/nut. Fasten original exhaust hanger to exhaust hanger extension and frame as shown in diagram.